



**PUBLIC HEALTH
LEARNING NETWORK**

Educating Professionals,
Elevating Practice.

Transforming the Way We Train Public Health Workers in the United States

Who We Are

The Public Health Learning Network (PHLN) is the nation's most comprehensive system of public health educators, experts, and thought leaders. We aim to advance public health practice and improve population health in the United States.

Our growing network of ten university-based regional public health training centers and 40 affiliate training centers (or "local performance sites") focuses on skills-based training in communities across the United States, Puerto Rico, U.S. Virgin Islands, and U.S. territories.

As the National Coordinating Center for Public Health Training, the National Network of Public Health Institutes is a collaborative leader and facilitator of the PHLN.

What We Offer

Public health professionals rely on us to help them keep up in a dynamic field—no matter their position, area of expertise, or work setting.

Our high-quality training courses and tools are free, adaptable, and easy to access; you can find them online or in-person.

What is distinct about the PHLN is our long-standing relationship with learners and partner organizations within communities, coupled with a national presence that offers cohesive and rigorous development and delivery of education and knowledge sharing across the country.

Who We Serve

The learners who turn to us for quality training resources work in local, tribal, and state health departments as well as the federal government. They also work in community organizations, hospitals, businesses, universities, and schools.

They include seasoned leaders and new professionals, students and educators, research specialists and practitioners—all committed to lifelong learning.

Join Us

As a supporter of and partner to our national network, you have an opportunity to ensure that our national public health training system responds rapidly to current and future public health needs. With your help, we'll transform the development and delivery of public health training to grow and support healthy communities.





Building a National System for Outstanding Public Health Training

Elevating the Workforce of Today and Tomorrow

We can only realize our vision for healthier people and communities with the help of a well-trained workforce, ready to take on large and complex challenges. That's why we're committed to being a go-to source of high-quality training for more than 500,000 professionals engaged in the critical work of public health practice and improving population health in the United States.

Our training opportunities are crosscutting, diverse, and tailored to the public health workforce of today and tomorrow. Our catalogue includes classroom-based courses as well as self-paced and real-time distance learning.

Bringing the Best Pieces Together for the Public Health Professional

Our network has evolved approaches to collaborative work that bring together cutting edge experts in public health education, who develop and share best practices and standards.

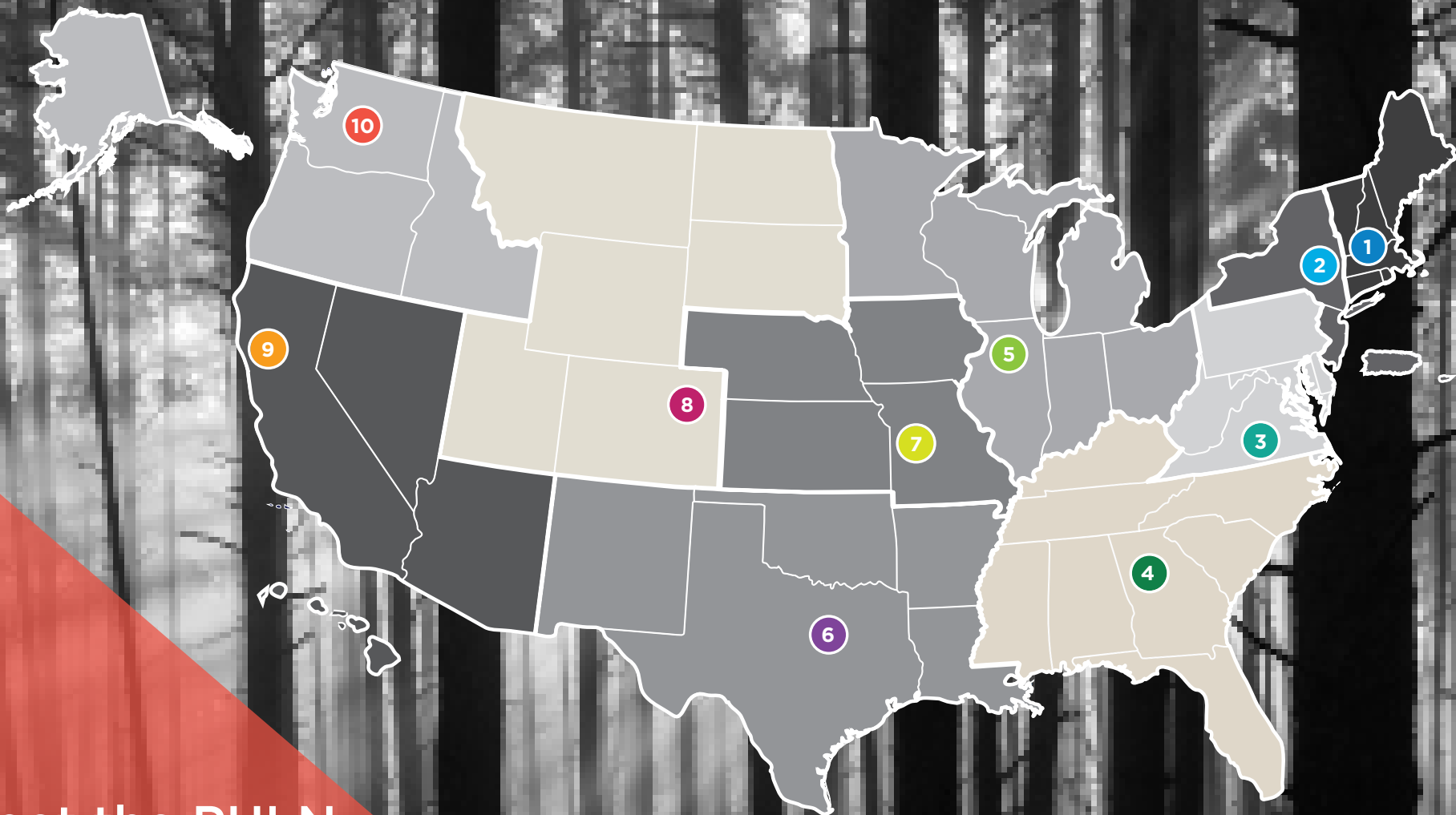
Each PHLN member brings decades of experience to bear on building the leadership,

managerial, scientific, and technical competencies of the public health workforce. On that foundation, our alliance and collective engagement help us achieve economies of scale, while ensuring our trainings are immediately relevant and accessible to public health professionals.

Good Housekeeping for a Great National System of Public Health Training

The PHLN works tirelessly to maintain a culture of continuous quality improvement. Our network seeks out any opportunity to improve how we develop, manage, offer, and evaluate the resources and tools we offer.

We are dedicated to meeting learners' needs, so we create opportunities for ongoing and consistent engagement with them. At both the national and local levels, we're continually gathering and applying data to ensure the highest quality experiences and the greatest value for our learners. And, we invite all learners to inform the learning network's direction through feedback on individual training courses or by contacting the National Coordinating Center for Public Health Training.



Meet the PHLN Network

From Boston to Arizona, from Louisiana to Washington State, each training center contributes expertise in particular skills-based training and topic areas. Together they make up the nation's most comprehensive source of public health training and support.

TRAINING CENTER

HHS REGION

HSRA GRANTEE

NEW ENGLAND PUBLIC HEALTH TRAINING CENTER	1	BOSTON UNIVERSITY
REGION 2 PUBLIC HEALTH TRAINING CENTER	2	COLUMBIA UNIVERSITY
MID-ATLANTIC REGIONAL PUBLIC HEALTH TRAINING CENTER	3	UNIVERSITY OF PITTSBURGH
REGION IV PUBLIC HEALTH TRAINING CENTER	4	EMORY UNIVERSITY
REGION V GREAT LAKES PUBLIC HEALTH TRAINING COLLABORATIVE	5	UNIVERSITY OF ILLINOIS AT CHICAGO
SOUTH CENTRAL PUBLIC HEALTH TRAINING CENTER	6	TULANE UNIVERSITY
MIDWESTERN PUBLIC HEALTH TRAINING CENTER	7	UNIVERSITY OF IOWA
ROCKY MOUNTAIN PUBLIC HEALTH TRAINING CENTER	8	UNIVERSITY OF COLORADO
WESTERN REGION PUBLIC HEALTH TRAINING CENTER	9	UNIVERSITY OF ARIZONA
NORTHWEST PUBLIC HEALTH TRAINING CENTER	10	UNIVERSITY OF WASHINGTON

Our Regional Public Health Training Centers

Embedded in accredited schools of public health, each training center aligns to a region defined by the U.S. Department of Health and Human Services (HHS) and maintains critical relationships with local education and training sites.

SKILLS

Change Management
Persuasive Communication
Diversity and Inclusion
Information and Analytics
Leadership
Policy Engagement
Problem Solving
Resource Management
Systems Thinking

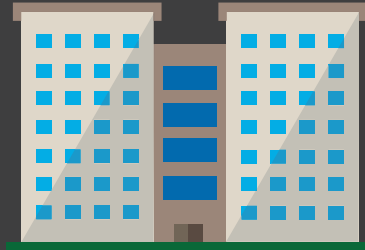
TOPICS

Behavioral Health
Cancer
Diabetes
Environmental Public Health
Health Disparities, Health Equity, Social Determinants of Health
Health Informatics and Health Information Technology
Infectious Diseases
Nutrition, Physical Activity and Obesity
Public Health Preparedness
Violence and Injury and Prevention

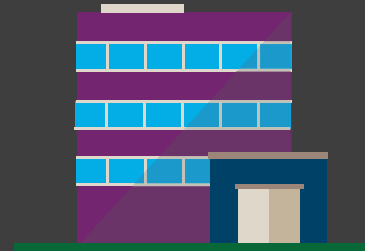
Our Specialties

Our network provides training and resources to support skills development in multiple topic areas.

Our Network by the Numbers



1 National Coordinating Center



10 Regional Public Health Training Centers



40 Local education & training sites



More than 100 staff members, including over 10 Instructional Designers, connect to thousands of subject matter experts to offer high-quality training for the nation's public health workforce.

A broad spectrum of professionals access and adapt our training courses for their needs. In addition to public health, PHLN learners work in the fields of:



COMMUNITY HEALTH



MEDICINE



NURSING



DENTISTRY



BEHAVIORAL HEALTH



HEALTH EDUCATION



EMERGENCY PREPAREDNESS & MANAGEMENT

and more!

87,500
23,000
8,200
11,000

We develop hundreds of new trainings each year. Last year, we trained **87,500** professionals.

More than **23,000** professionals working in medically underserved areas

More than **8,200** professionals working in rural areas

More than **11,000** professionals working in primary care settings



We offered nearly 1,400 Continuing Education courses and supported students in providing nearly 12,200 contact hours in medically underserved areas through practicum field placements.



Learn More about Us, Our Work, and Our Future

An Advisory Council representing major public health policy and practice organizations provides ongoing thought leadership to complement the expertise of the PHLN.

These organizations include:

Association of Schools and Programs of Public Health

Association of State and Territorial Health Officials

Centers for Disease Control & Prevention

de Beaumont Foundation

Michigan Public Health Institute

National Association of County and City Health Officials

National Collaborative for Health Equity

National Environmental Health Association

National Indian Health Board

Public Health Accreditation Board

Public Health Foundation

W.K. Kellogg Foundation

Mobilizing more than 40 member public health institutes—along with ten university-based regional training centers and their 40 local affiliates—the National Network of Public Health Institutes is a technical, financial, professional, and information network. We connect more than 4,500 subject-matter experts with organizational partners across the United States to serve the entire nation and U.S. territories. To build healthy communities, we support the public health workforce, promote collaboration across sectors, and drive the field towards cutting-edge research and practice.

To learn more about the Public Health Learning Network and the National Coordinating Center visit nnphi.org/phln or contact us at training@nnphi.org

**The National Coordinating Center for
Public Health Training**

nnphi.org/phln
training@nnphi.org

Washington DC Office:

1300 Connecticut Ave. NW, Suite 510
Washington, DC 20036
(P) 888.996.6744 (888.99.NNPHI)
(F) 504.301.9820

New Orleans Office:

1100 Poydras Street, Suite 950
New Orleans, LA 70163
(P) 888.996.6744 (888.99.NNPHI)
(F) 504.301.9820



**PUBLIC HEALTH
LEARNING NETWORK**
Educating Professionals,
Elevating Practice.



The Public Health Learning Network is supported by the Health Resources and Services Administration (HRSA) of the U.S. Department of Health and Human Services under HRSA-UB-6HP27435. This information or content and conclusions are those of the author and should not be construed as the official position or policy of, nor should any endorsements be inferred by HRSA, HHS or the U.S. Government.