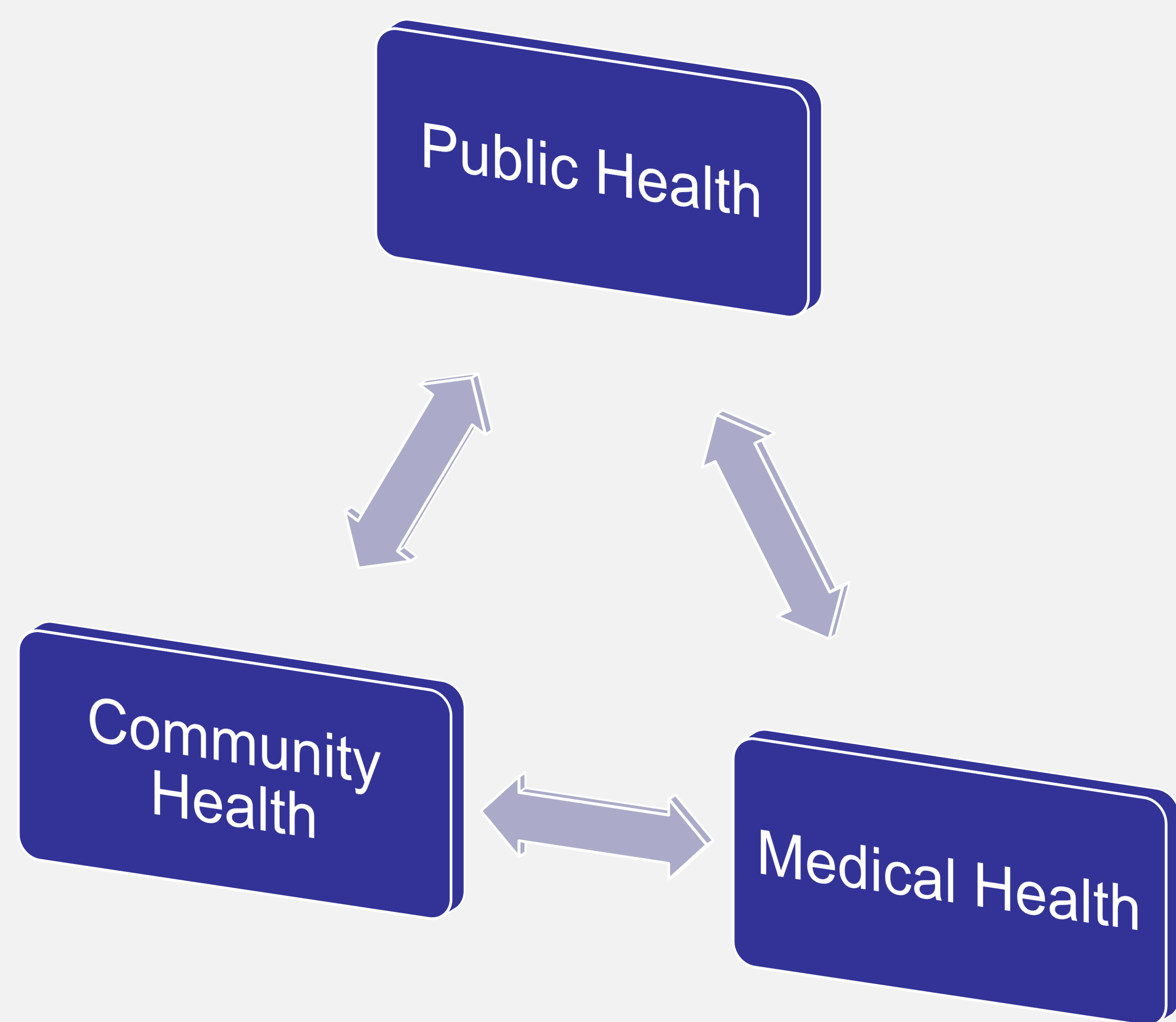


Tackling Access to Care Barriers from All Angles: Improving Population Health

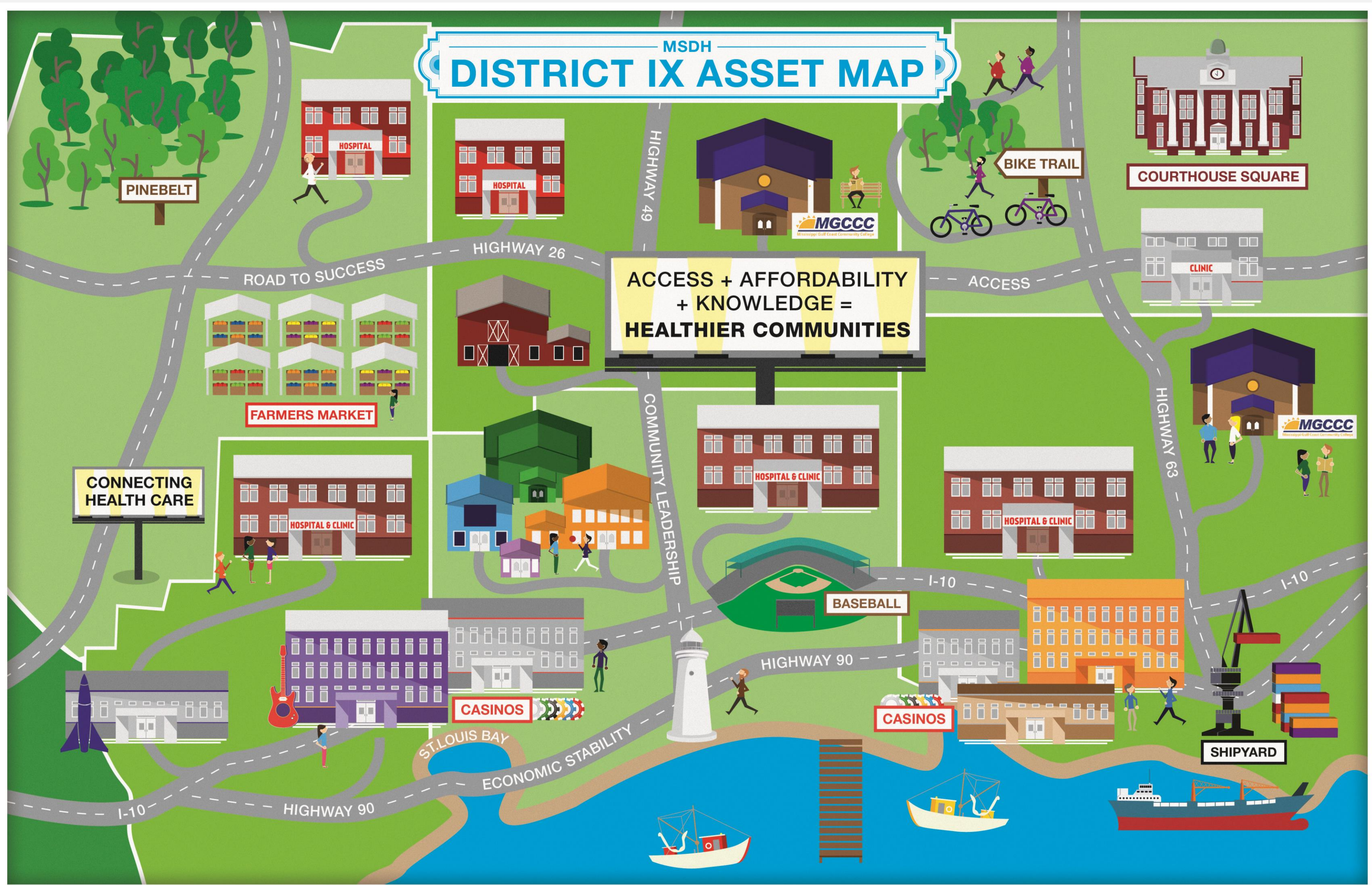
PROJECT DESCRIPTION: MSDH DISTRICT IX COMMUNITY HEALTH ASSESSMENT AND PRIORITY PROCESS

Public health institutes (PHI) are poised to convene unique partnerships to solve long term challenges facing population health. Additionally, many PHIs across the country are acting as technical assistant agents to the public health accreditation process. Staff with the Mississippi Public Health Institute (MSPHI) used focus groups, rapid community assessment, and GIS mapping to assess community health in the Gulf Coast region of Mississippi, also known as the Mississippi State Department of Health District IX. The MAPP process was used. All four assessments – community themes and strengths, forces of change, community health status, and local public health systems assessments – were conducted and used in the prioritization process. Access to primary health care services was identified a major challenge in this region. The MSPHI is collaborating with hospitals, businesses, the gaming industry, mental health, academia, and local public health programs to create solutions that can be implemented and sustained in District IX.

GOALS: ORGANIZATIONAL LINKAGES



COMMUNITY STORY: ASSET MAPPING



STRATEGIES: POLICY IMPLICATIONS

- COMMUNITY**
- Workflow redesign for clinic community linkages
 - Assurance of personal health services in the community
 - Health workforce assurance
 - Access to affordable and culturally appropriate health care
- CLINICAL**
- Reimbursement matches preventive work being done
 - Long term cost savings
 - Health care services are proactive, not reactive

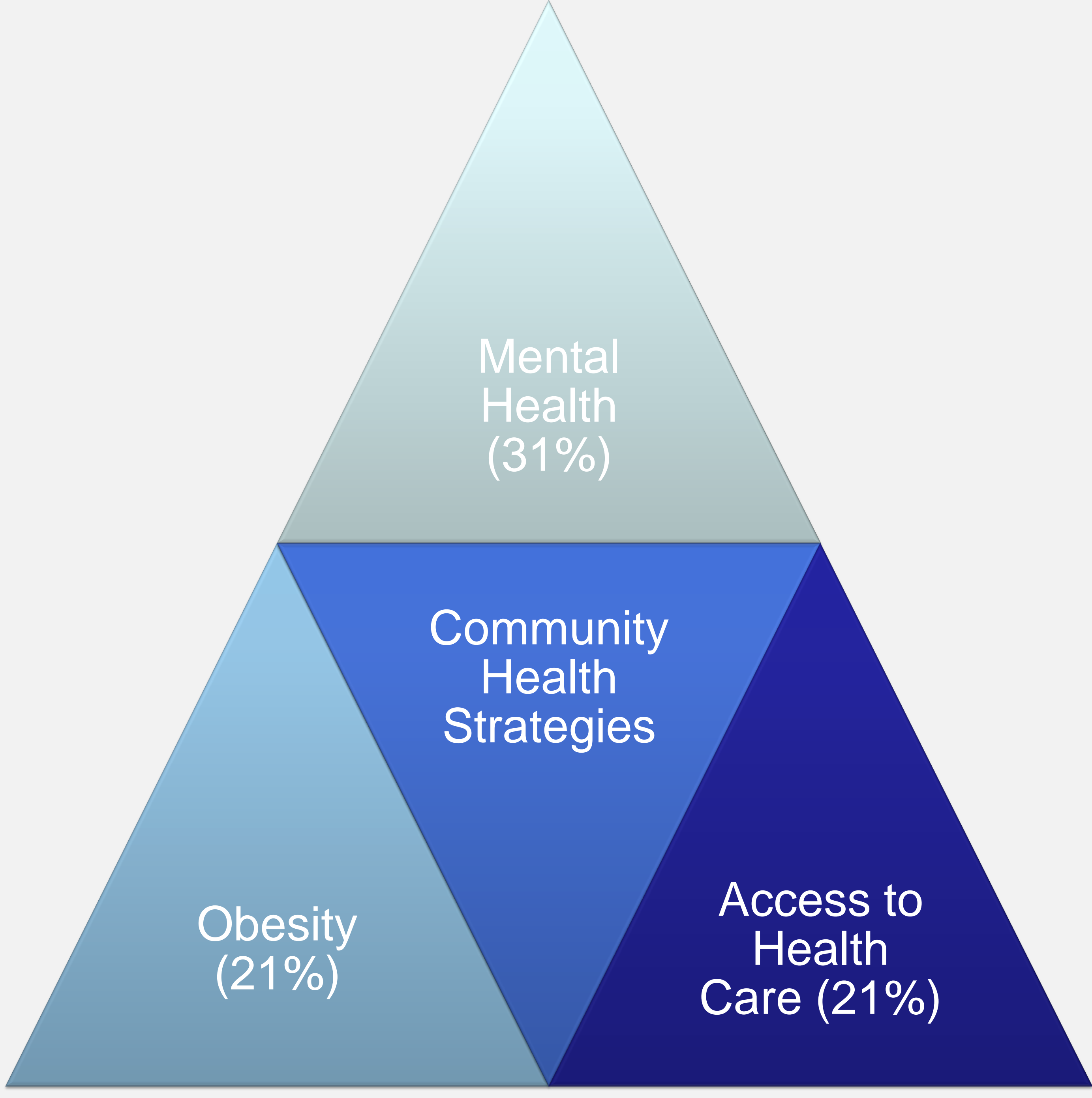


LOCAL PUBLIC HEALTH SYSTEMS CAPACITY ASSESSMENT

Identified Capacity Priorities

- **Monitor** health status to identify and solve community health problems.
- **Mobilize** community partnerships and action to identify and solve health problems.
- **Link** people to needed personal health services and assure the provision of health care when otherwise unavailable.
- **Assure** competent public and personal health care workforce.
- **Evaluate** effectiveness, accessibility, and quality of personal and population-based health services.
- **Research** for new insights and innovative solutions to health problems.

PRIORITIES TO IMPACT CARE



Authors:
Anna Lyn Whitt, LMSW, MPH
Kathy Beam Khayat, MS