

Introduction:

Alameda County's Health Disparities grant program evaluates COVID-19 strategies for advancing health equity in at-risk populations, emphasizing partnerships and community engagement.

Research Questions:

1. How did programs build trust and boost community engagement for successful vaccination efforts?
2. What factors led to their success in providing education and resources beyond COVID-19?
3. How do these partnerships enhance addressing health inequities more effectively?

Methods:

The evaluation employed mixed methods, incorporating qualitative interviews and data analysis to assess partnership strategies, community engagement, and program outcomes.

Findings:

1. Adapting COVID-19 education to cultural and linguistic preferences was a key strategy.
2. Meaningful dialogue between government and community groups ensured effective outreach and service delivery.
3. Scheduled bi-weekly briefing meetings with county staff bolstered comprehension and secured the dissemination of accurate information.

Discussion:

Findings stress the crucial role of partnership strategies and community engagement in promoting health equity. Cultural sensitivity and a holistic approach have driven program success.

Conclusion:

The evaluation highlights the effectiveness of innovative partnership strategies in advancing health equity during COVID-19, with implications for future initiatives targeting at-risk populations.

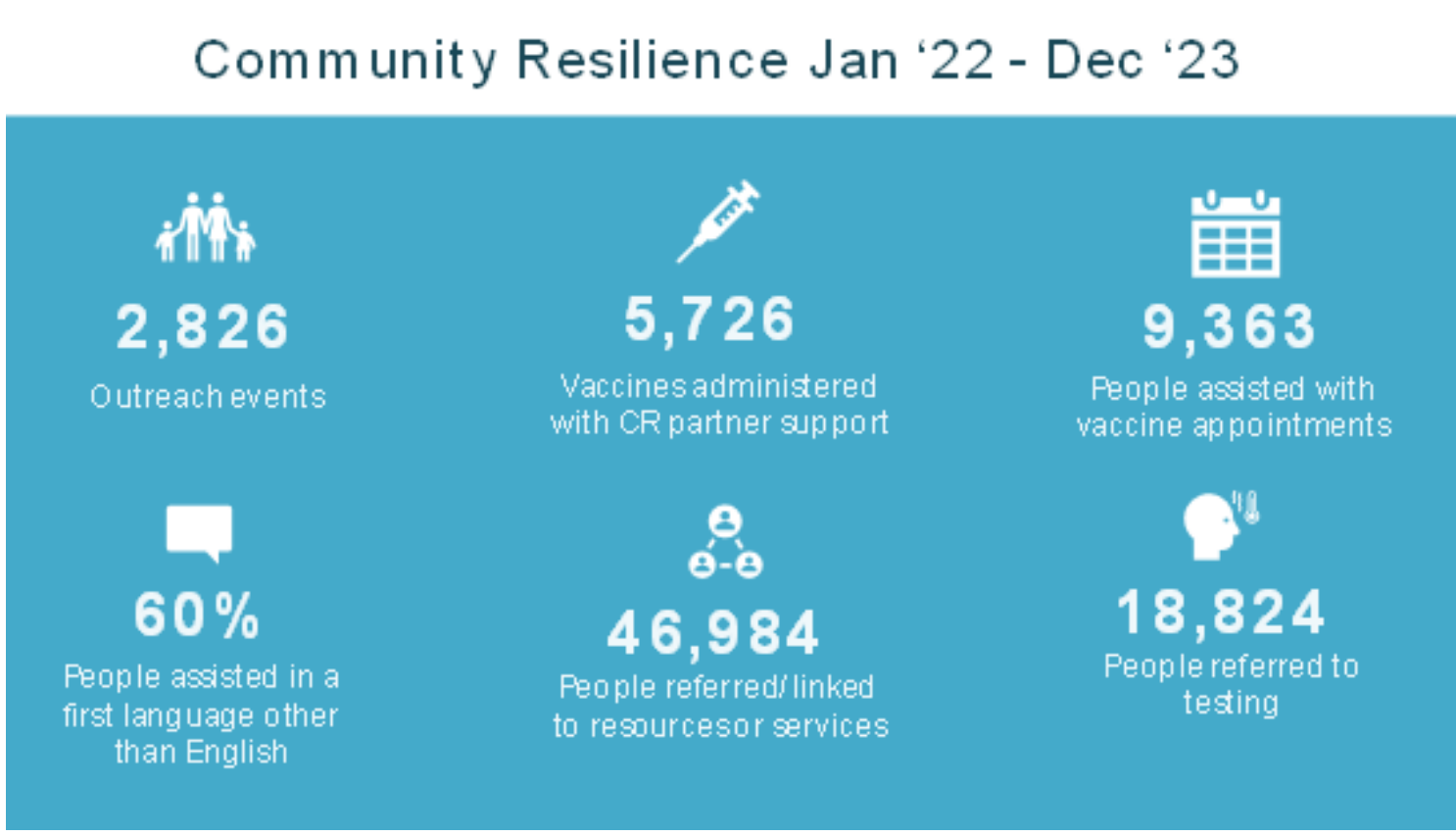
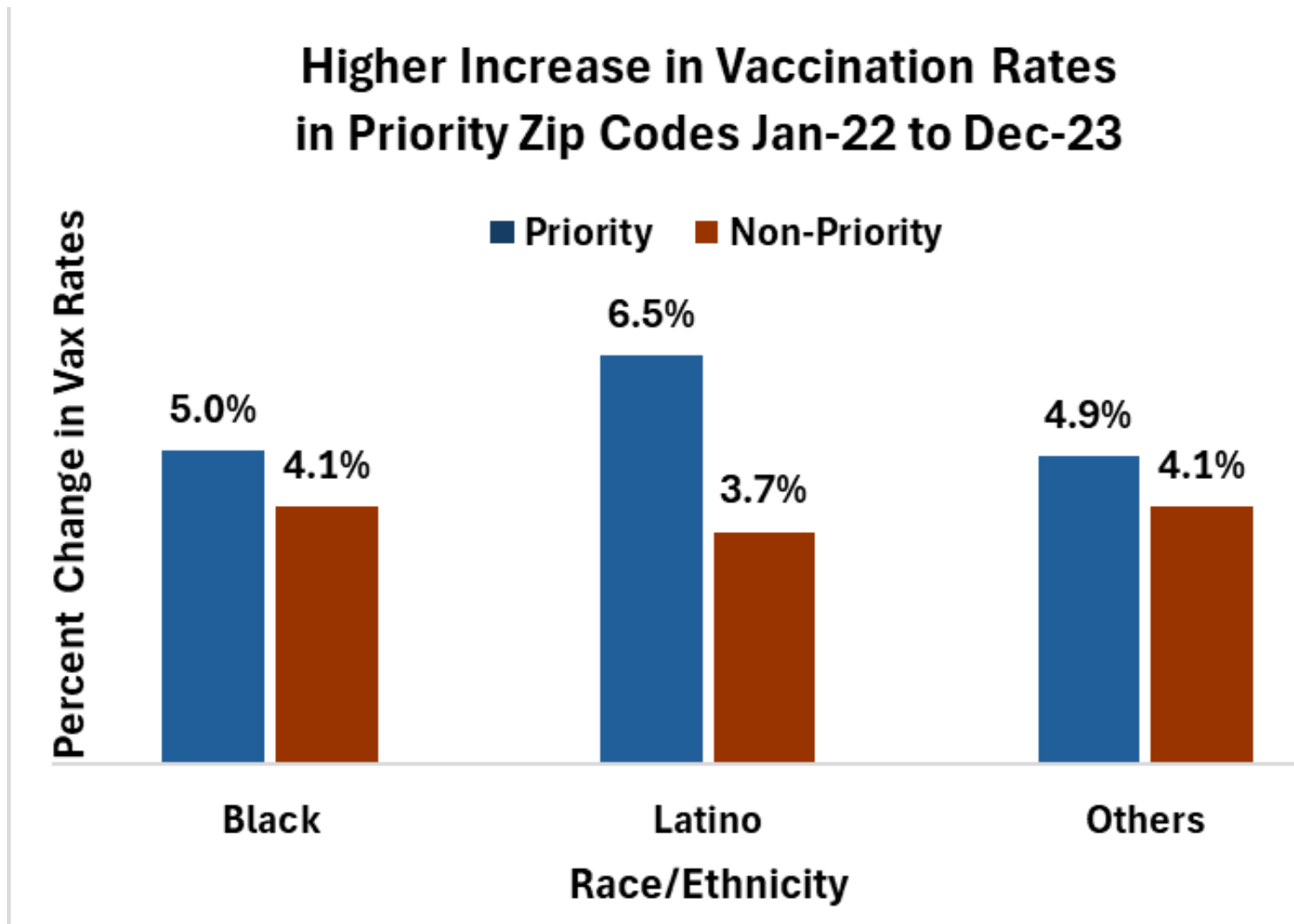
Acknowledgments:

Thanks to participants and organizations involved.

Areas with Community Engagement from Grassroots Organizations had Higher Increases in Vaccination Rates



Partner Agencies Targeted Outreach and Services to Alameda County's Priority Zip Codes, chosen based on highest concentrations of poverty and levels of COVID.



CONTACT INFO
Claudia Campos
claudia.campos@acgov.org