

Pathways to Population Health Equity

Well-Being and Equity (WE) in the World



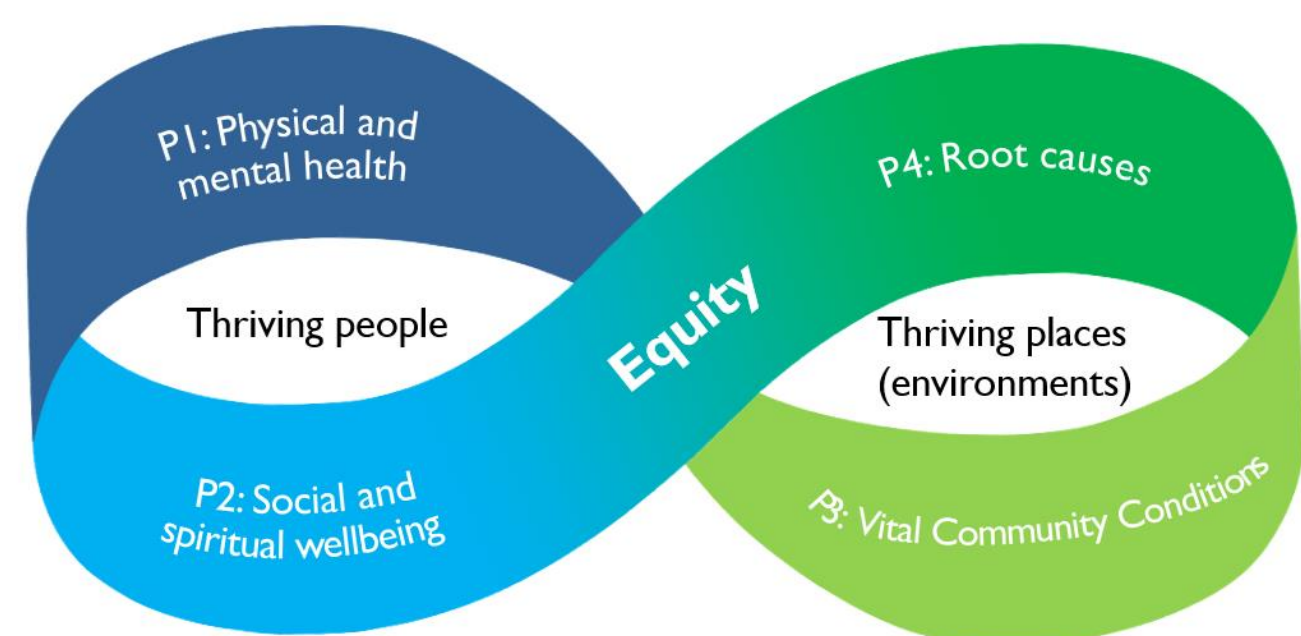
PATHWAYS TO POPULATION
— HEALTH EQUITY —

BACKGROUND

- To advance population health and achieve equity, we need to go beyond controlling or preventing disease to creating the conditions for everyone to thrive.

WHAT IS P2PHE?

- Pathways to Population Health Equity (P2PHE) was developed by WE in the World and ASTHO with public health change agents and communities across the country at the request of CDC
- P2PHE presents four strategic portfolios for public health practitioners to align their work to build a more, prepared and resilient and proactive public health system
- P2PHE provides practical tools to take action, regardless of where you are on your population health and equity journey
- P2PHE is aligned with other tools and processes in public health (e.g., PHAB accreditation standards)



RHODE ISLAND

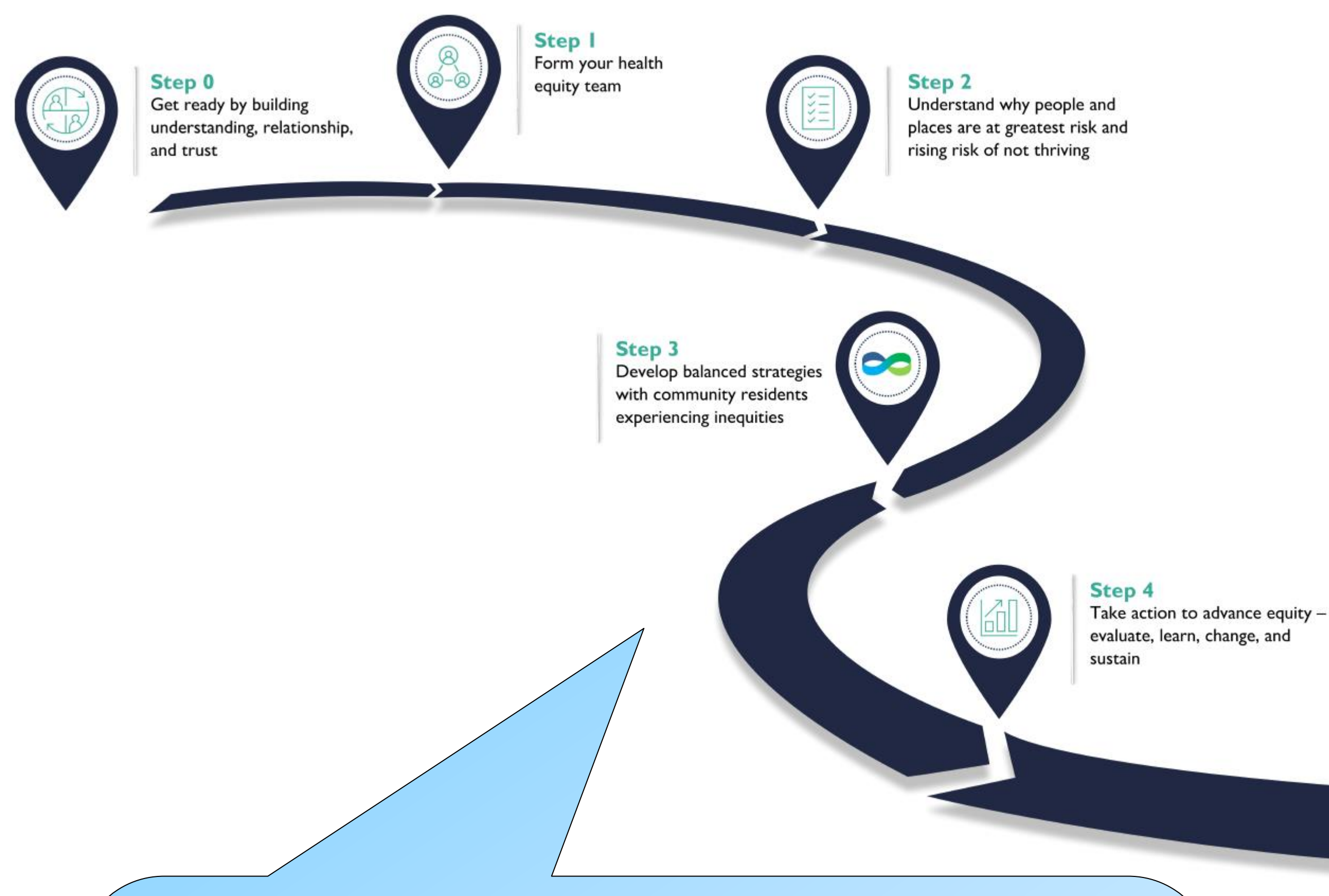
Rhode to Equity built clinical-community linkages to advance health equity using the P2PHE framework to organize efforts. Geographic health equity teams include Health Equity Zones, community residents, community organizations, primary care clinics, accountable entities, community health workers (CHWs) and community care teams. Teams work together to address both immediate mental, physical, social and spiritual well-being needs along with upstream community conditions and root causes.

Impact: Brought the state together to address immediate health needs around housing, food, and other vital conditions that integrated and valued the role of CHWs as leaders and trusted messengers, advanced upstream work in food security, housing, youth violence in partnership with community partners.

ILLINOIS

Activating Relationships in Illinois for Systemic Equity (ARISE) is a joint initiative of the Illinois Department of Public Health's Center for Minority Health Services and The Center for Rural Health in collaboration with WE in the World and funded by CDC. 11 motivated community collaborations, their local health departments, and seven organizations in urban and rural communities engaged in intensive "learning-and-doing" programs using P2PHE.

Impact: Brought together teams of public health, multi-sector leaders and community residents experiencing inequities to create meaningful change while dreaming about what is possible for their communities in the next 7-10 years.



NEW MEXICO

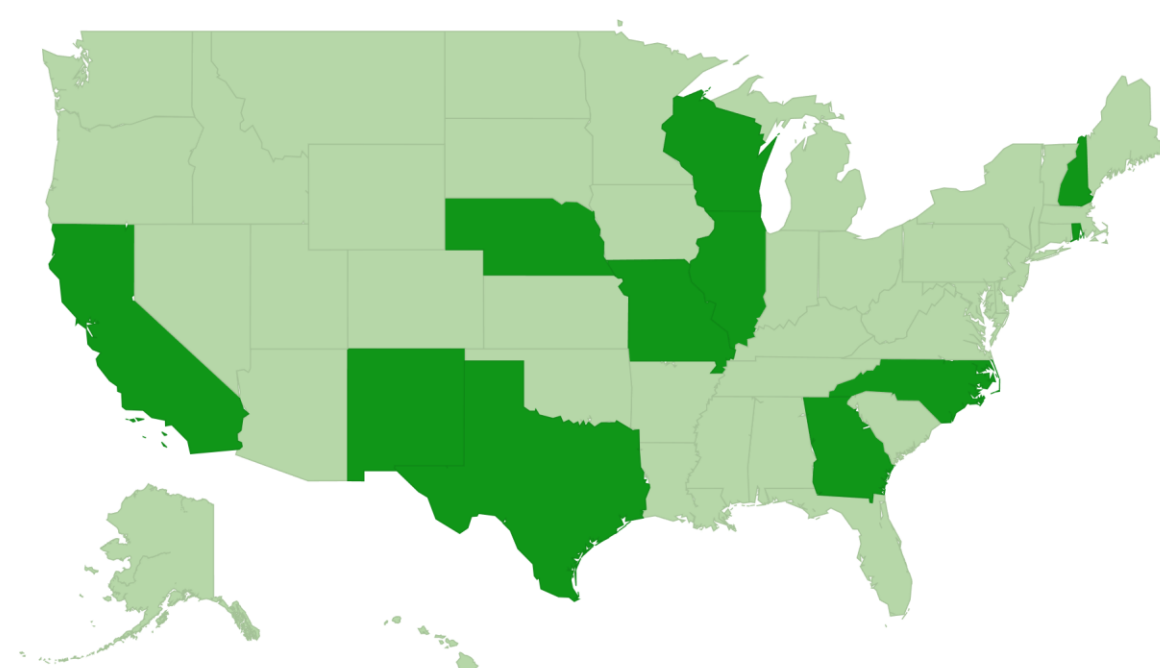
Adopted P2PHE as their framework to develop a health equity strategy and plan for the entire state. They mapped the contributions of their teams to each of the four portfolios of P2PHE. 732 people have taken an adapted version of the Compass with each department setting equity goals based on P2PHE.

Impact: Built a common language across the state and increased their capacity and skills to advance health equity through addressing social needs, underlying community conditions and root causes. Built a decision tool to assure that new initiatives led to a more balanced strategy.



OUTCOMES

- 45+ contributors helped develop the framework
- 4 states and 86 communities have adopted the P2PHE framework
- 2,548 changemakers have accessed tools developed by WE to advance public health equity
- Tools have been adapted for rural populations and payers



JOIN THE MOVEMENT

Learn more about the framework and access the tools and resources here: <https://www.publichealthequity.org/>