

CAPITAL ASSET INVESTMENTS: FUNDING INNOVATION THAT ADVANCES EQUITY AND SUPPORTS SUSTAINABLE COMMUNITY TRANSFORMATION

Tanisa Adimu, M.P.H.; Hilary Carruthers, Dr.P.H.; Leigh Alderman, Dr.P.H., J.D., M.P.H.
Georgia Health Policy Center | Andrew Young School of Policy Studies | Georgia State University

BACKGROUND

The Georgia Statewide Health Equity Initiative was created to further advance initiatives to improve public health and meet the needs of Georgia’s most marginalized people, while decreasing the disparities that became more evident during the COVID-19 pandemic. The initiative is coordinated by the Georgia Health Policy Center (GHPC) and supported by the Georgia Department of Public Health (DPH) through funding from the Centers for Disease Control and Prevention.

The Statewide Health Equity Initiative utilizes three streams or focus areas to do its work:

- Health Opportunity Pilots (HOP):** Through A Healthier Georgia, community-based organizations and collaboratives receive financial and technical assistance to implement innovative solutions to achieve health, well-being, and equity through initiatives centered in and led by communities.
- Community of Practice:** Vested stakeholders across the state work together to eliminate health inequities and disparities.
- Data and Reporting of Program:** With the collection and analysis of data, the Statewide Health Equity Initiative will accelerate research, learning, and improved health outcomes.

A HEALTHIER GEORGIA: REQUEST FOR PROPOSALS (RFP)

GHPC designed and implemented an RFP process to identify and select HOP community sites in Georgia as part of the A Healthier Georgia funding opportunity. The center designed the process using experience coordinating other projects focused on community-led health equity initiatives, experience with proposal development and grants management, and findings from two landscape scans conducted in 2022-2023 as part of the initial work under this project. Final applicants were selected based on their responses to the proposal sections found in Table 1.

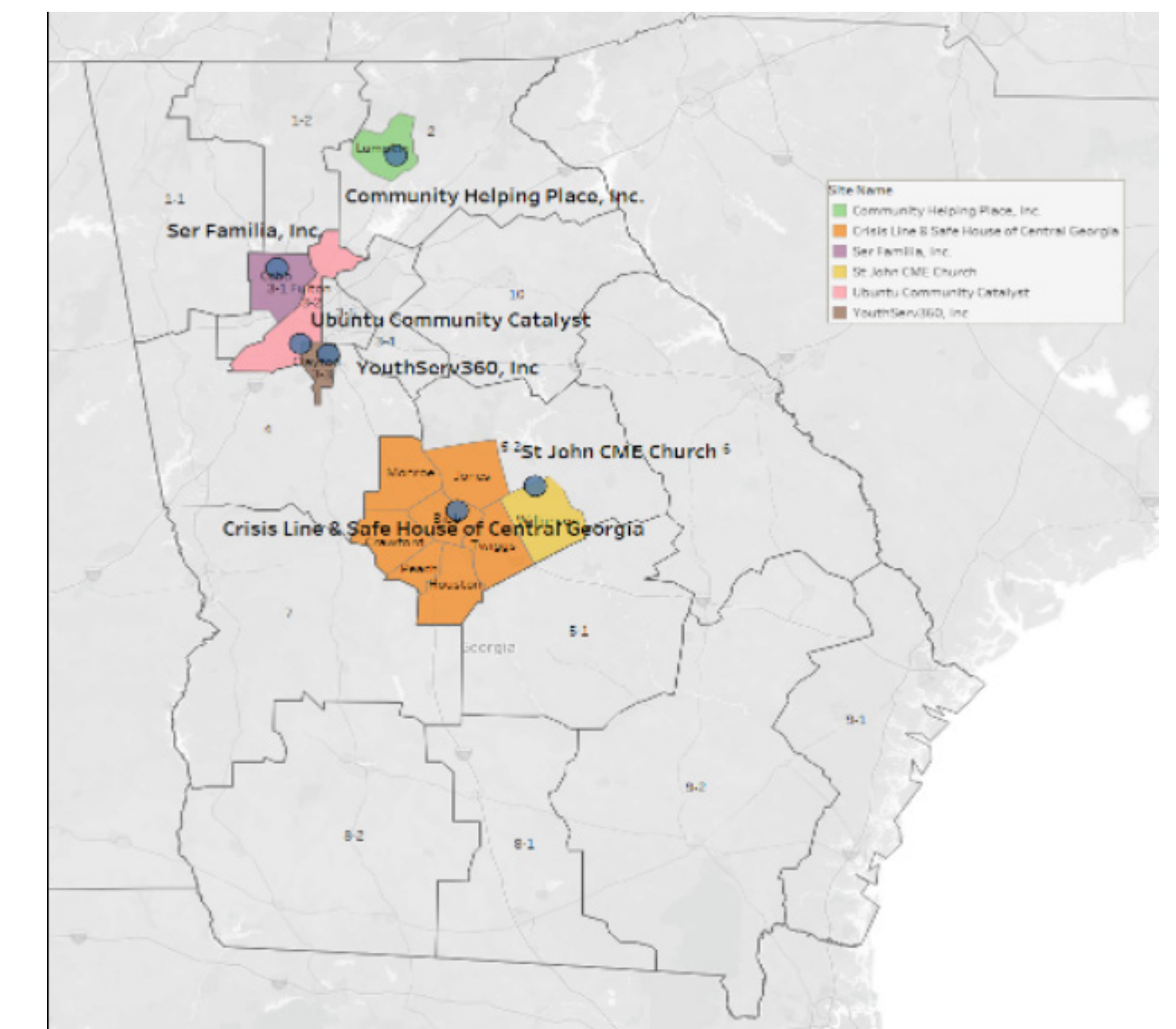
Table 1: RFP Proposal Design

Proposal Section	Description
Project story	Information about the project area, population, issue statement, community assets and growth opportunities
Project plan	Project plan (e.g., how it was identified, and how it addresses a priority identified by the community), partnership engagement, project administration, and evaluation plan
Sustainability strategies	Description of sustainability plan (for their project beyond the two-year grant period)
Collaborative budgeting	Codesign process with communities to define project plans and budgets through a collaborative budgeting and plan development approach.

HEALTH OPPORTUNITY PILOT SITES

After a multitiered RFP application and review process, GHPC identified six geographically diverse, community-based collaboratives as initial HOP communities: Crisis Line & Safe House (Macon, Ga.), Ser Familia Inc. (Cobb County, Ga.), YouthServ360, Inc. (doing business as 7 Pillars Career Academy; Clayton County), Community Helping Place (Lumpkin County), St. John CME Church (Wilkinson County), and Ubuntu Community Catalyst (south Fulton County). A seventh site in one of the highest need areas of the state – southwest Georgia – will be selected in March 2024.

Health Opportunity Pilot Site Map



LOCAL CAPITAL ASSET INVESTMENTS

DPH and GHPC requested to use OT21-2103 funds for capital asset acquisition for three of the six HOP sites in Georgia. These buildings and infrastructure systems support critical needs and will contribute to positive environmental and social outcomes. Table 2 provides a brief description of each capital asset investment.

Table 2: Capital Assets and Intended Impacts.

Community Health Place (CHP)	Crisis Line & Safe House of Central Georgia	YouthServ360, Inc. (7 Pillars Career Academy)
CHP’s mobile unit will serve more clients and expand the services offered. This “Opportunity Bus” will increase access to health care, social services, computers to apply for jobs, and financial coaching.	Sixteen partners serving 24 counties will assist their collective clients navigate the complex systems survivors of violence face by co-locating their services into one building referred to as One Safe Place Macon.	Recognizing that stable housing and academic outcomes are interrelated, middle schoolers receive hands-on construction experience Using this multi-generational approach, students will support renovations of a housing unit for families in the community.

TECHNICAL ASSISTANCE

Each site receives technical assistance from two GHPC technical assistance providers. To confront the unique challenges of health disparities and inequities, technical assistance providers support capacity needs and assist in identifying additional investment opportunities, including support to increase financial carrying capacity, build competency in impact investing, advance community-centered design, and improve access to vital conditions.

Technical assistance support for community sites is guided by a set of core principles:

- Focus on relationships
- Offer technical and adaptive support
- Utilize a team-based technical assistance approach
- Engage the smartest people to cultivate a strategic mindset
- Be systematic but flexible
- Focus on sustainability
- Learn together on the journey